

D500DUO Undercounter Dishwasher

Technical Specifications



CLASSEQ
Warewashing Made Simple.

D500DUO

Front-loading commercial dishwasher with a digital display, three wash programs and WRAS compliance for effortless and consistently clean results.

The D500DUO is an easy to operate, under counter dishwasher with a 500 x 500mm basket that holds 18 full-sized plates. It features three wash cycles light (2min), standard (3min) and heavy (5min) - ensuring that it is optimised for cleaning some of the toughest warewashing requirements.

The digital LCD display accurately shows the temperature of the wash tank and rinse boiler, re-assuring the operator that it is up to temperature and fully sanitising during the wash cycle.

With intuitive colour coded lighting and universally recognised symbols, this machine has been designed to make operating as simple as possible, whilst also featuring performance enhancing customisations through its advanced settings mode. Additionally, its clever software constantly monitors wash cycles, temperatures, chemical usage and any errors giving valuable data which is used to improve operational efficiencies.

The Duo range of products all come with drain pumps, rinse booster pumps, built in chemical dispensers and full double skinned construction ensuring they meet all installation regulations and requirements.





UK Manufactured

Our machines are Made in Britain (Staffordshire).



LCD display

The D500DUO enhances user functionality by displaying rinse and wash tank temperatures.



Water Board (WRAS) compliant

All Duo machines are fully compliant with essential Water Board regulations.



Colour Coded Display

Amber flashing - Machine heating
Blue - Machine in cycle
Green - Machine ready



3 Wash Programs

The D500DUO Light (2 min), Standard (3min) and heavy (5min) cycles allow for maximum output without compromising wash quality.



Double skinned sides and door

Allows for quieter operation and reduced heat loss.



Advanced Customer Features

Adjust rinse aid and detergent settings, priming of chemical pumps and set water softener to match local water hardness levels (WS models only).



Operational Data monitoring

Our machine constantly measures all cycles, heating and errors providing useful data for improving efficiencies.

Hydraulic specifications

Water supply connection	G3/4" (3/4" BSP)
Minimum allowed supply water pressure	0.5 bar D500DUO model only
Required water flow rate	11 L/min D500DUO model only
Minimum incoming water temperature	4°C
Maximum incoming water temperature	55°C
Pumped drain height (from machine base)	600 mm

Electrical specifications

Standard Set-up

Amps Required	15 a (1 phase)
Standard Operating Voltage	220-230V / 1N~ / 50Hz
Total Connected Load	3.18kW

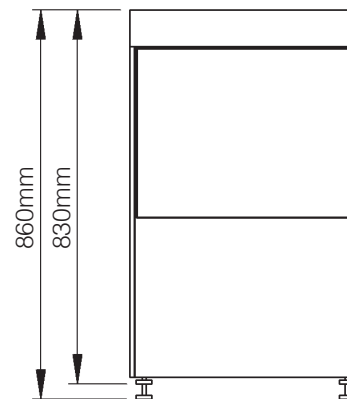
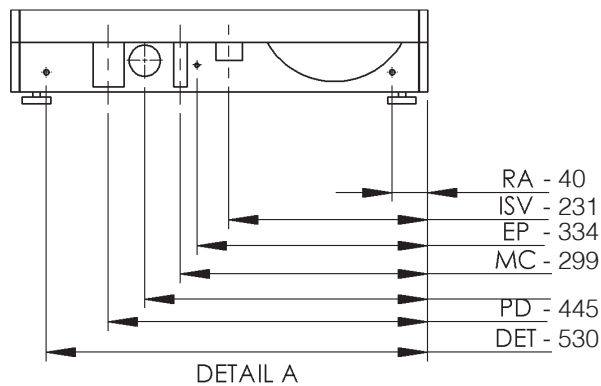
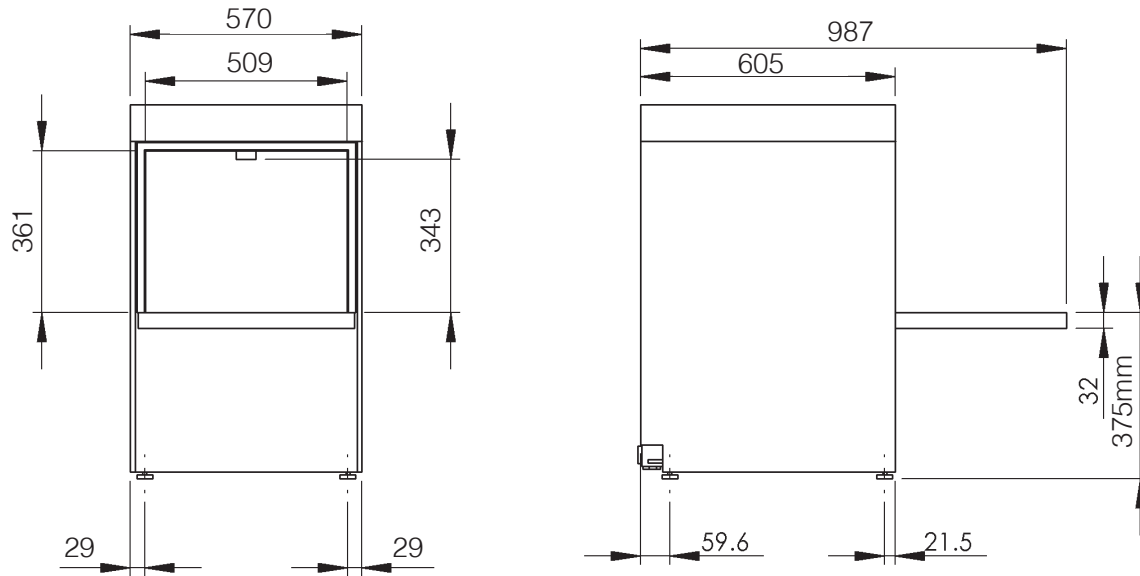
Performance

Wash tank element	2.00kW
Rinse tank element	2.60kW
Wash tank capacity	14.33 litres
Rinse tank capacity	7.5 litres
Rinse water consumption at 3 bar	3.00 L/cycle
Theoretical maximum racks/hours	20
Wash tank temperature	55°C
Rinse tank temperature	82°C
Wash pump power	0.58 kW
Rinse pump power	0.19 kW

Machine Features:

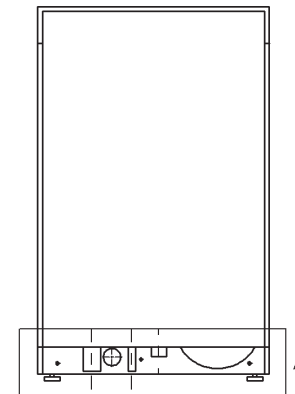
1 500mm x 500mm basket	2 Built-in chemical pumps	3 Drain pump	4 Rinse Booster Pump	5 Temperature interlock - guarantees hot rinse
6 Energy saving standby mode	7 Stainless steel dual wash filter system	8 Assisted self-clean	9 Easily removable components	

Mechanical Specifications



Additional Info:

	D500DUO
Wash water temperature	55°C
Dish Washer rinse temperature	82°C
Noise level	Under 70dB
Empty weight	54.7kg
Fully Loaded weight	75.2kg
Packed weight	68.3kg DUO model



Dimensions (mm):

570 (W) x 830 (H) (860 max) x 605 (D)

Description	Symbol	Radius from machine (m)
Rinse aid tube	RA	3
Inlet solenoid valve	ISV	1.8
Mains electrical cable	EC	1.3
Pumped waster water outlet	PD	1.5
Equipotential bonding stud	EP	-
Detergent tube	DET	3

Please Note: All dimensions in mm

Contact:

Telephone: +61 2 9645 3221

Email: sales@winterhalter.com.au

1 Glendenning Rd,

Glendenning, NSW, 2761

www.classeq.com.au

CLASSEQ
Warewashing Made Simple.